



# Food Loss and Waste

2021 APEC survey on COVID-19 impact



Dr. Kenneth Bicol Dy

Webinar on drafting the “Implementation Plan for Reducing Food Loss and Waste (FLW)”

Presented on 10-May-2022, Chinese Taipei



Respondents

# ASIA

P.R. China

1

Philippines

7

Indonesia

2

Singapore

3

Japan

5

Chinese Taipei

22

Republic of  
Korea

4

Thailand

7

Malaysia

9

Viet Nam

2



# OCEANIA

## A

**Papua New  
Guinea**

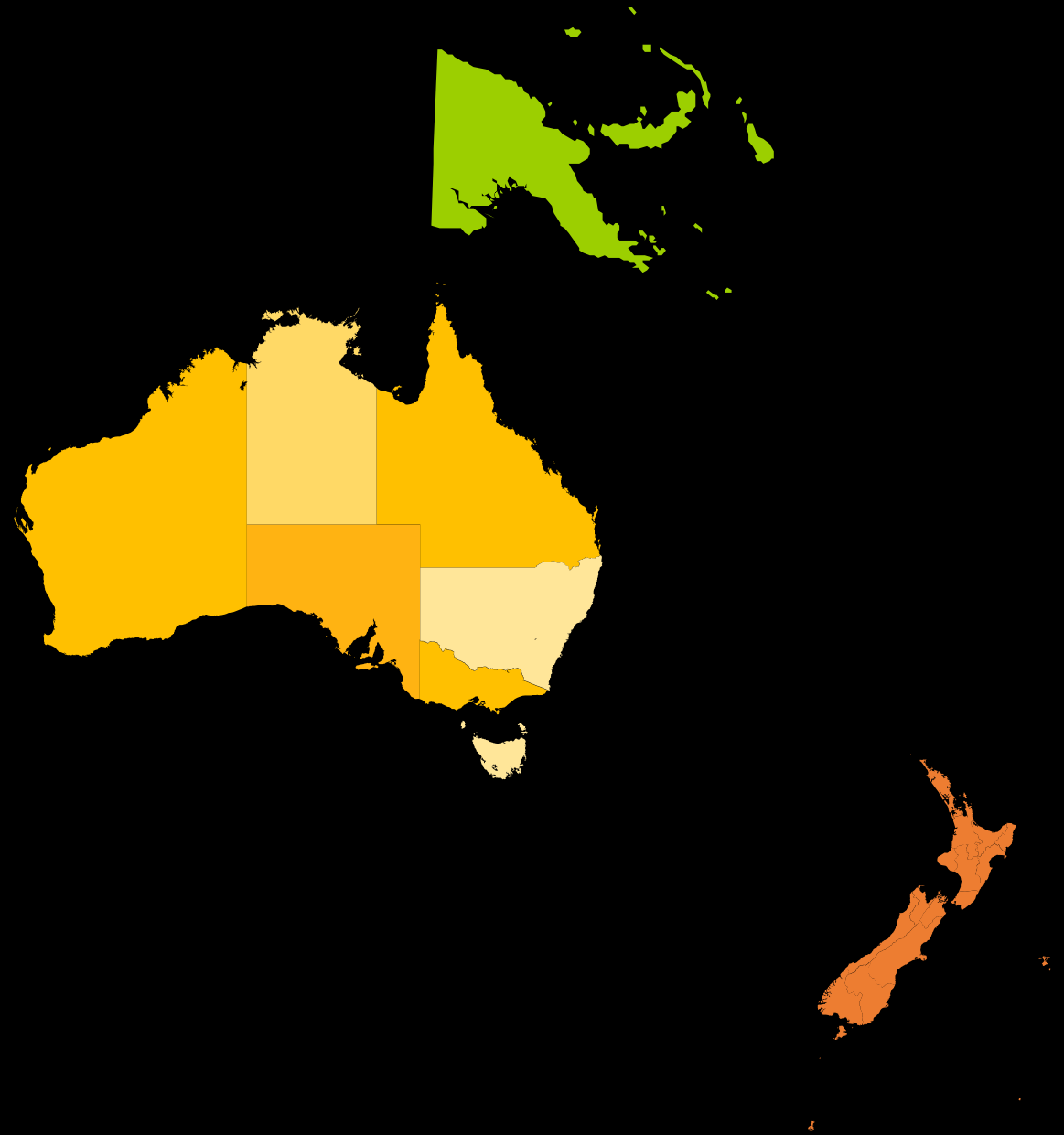
5

**Australia**

1

**New Zealand**

5



# SOUTH AMERICA

CHILE

2

PERU

6



# NORTH AMERICA



MEXICO

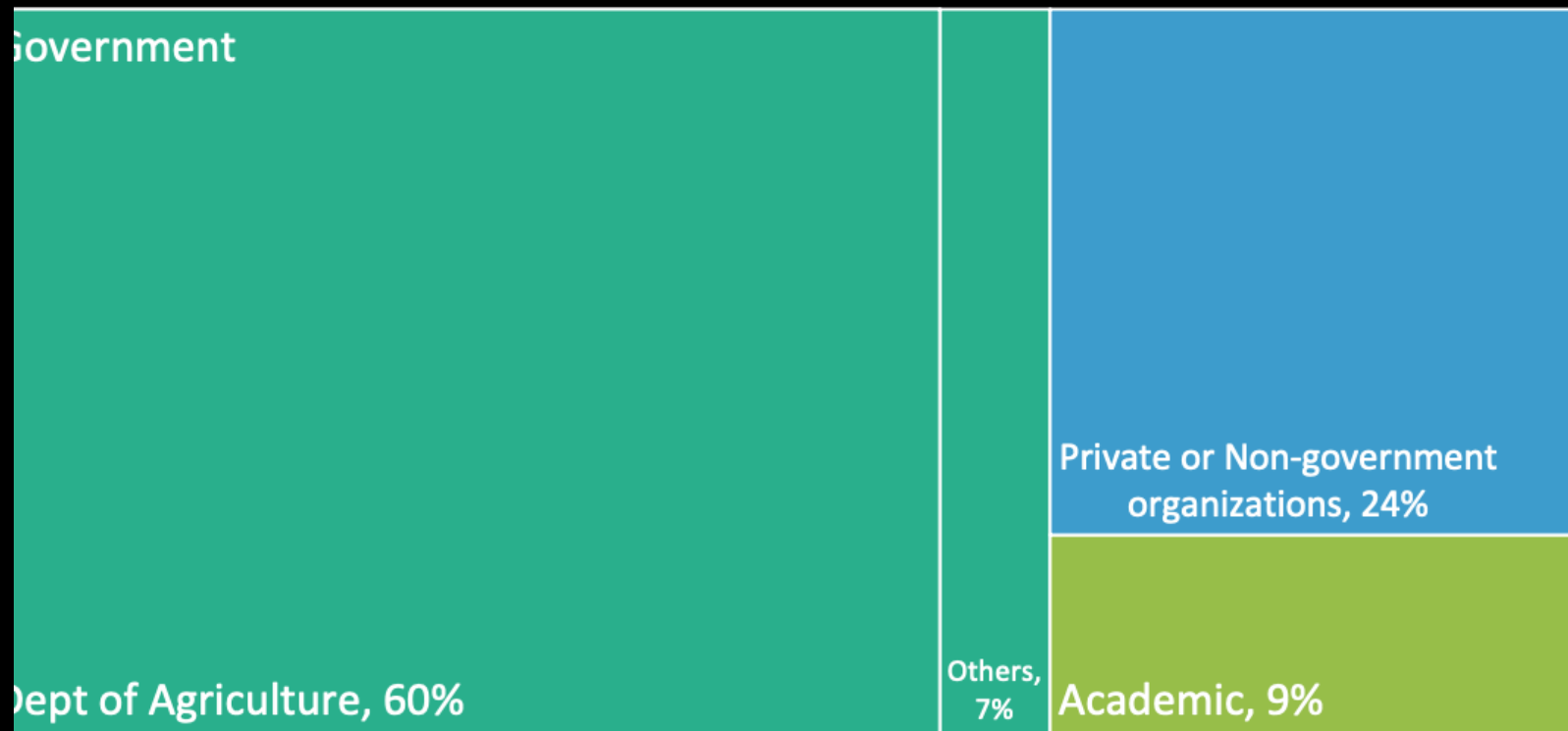
5

USA

1

## Respondents by Sector

■ Government ■ Academic ■ Private or Non-government organizations





BEFORE  
COVID-19





# BEFORE COVID-19

Challenges in  
Policy  
Formulation



FLW-related  
Policies and  
Programs



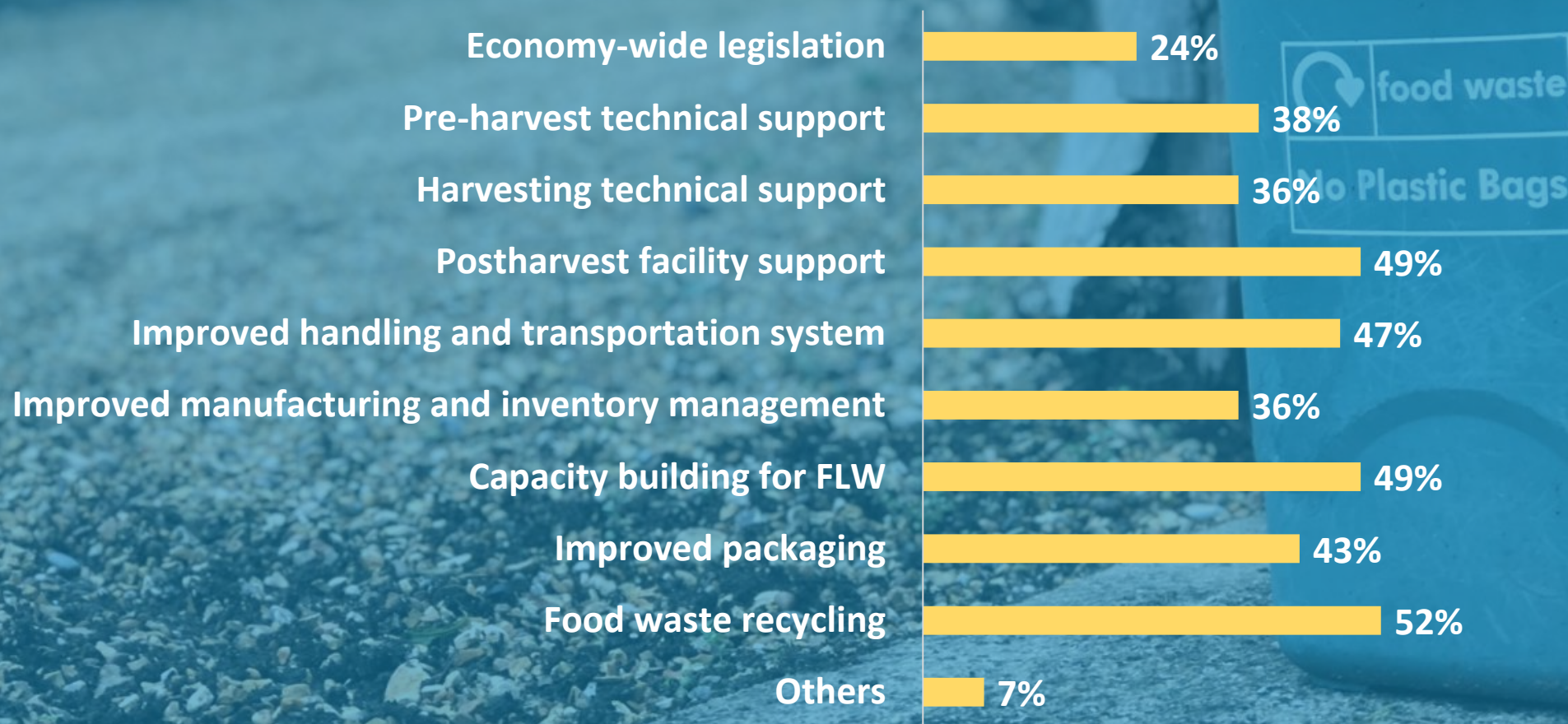
Challenges in  
Policy  
Implementation







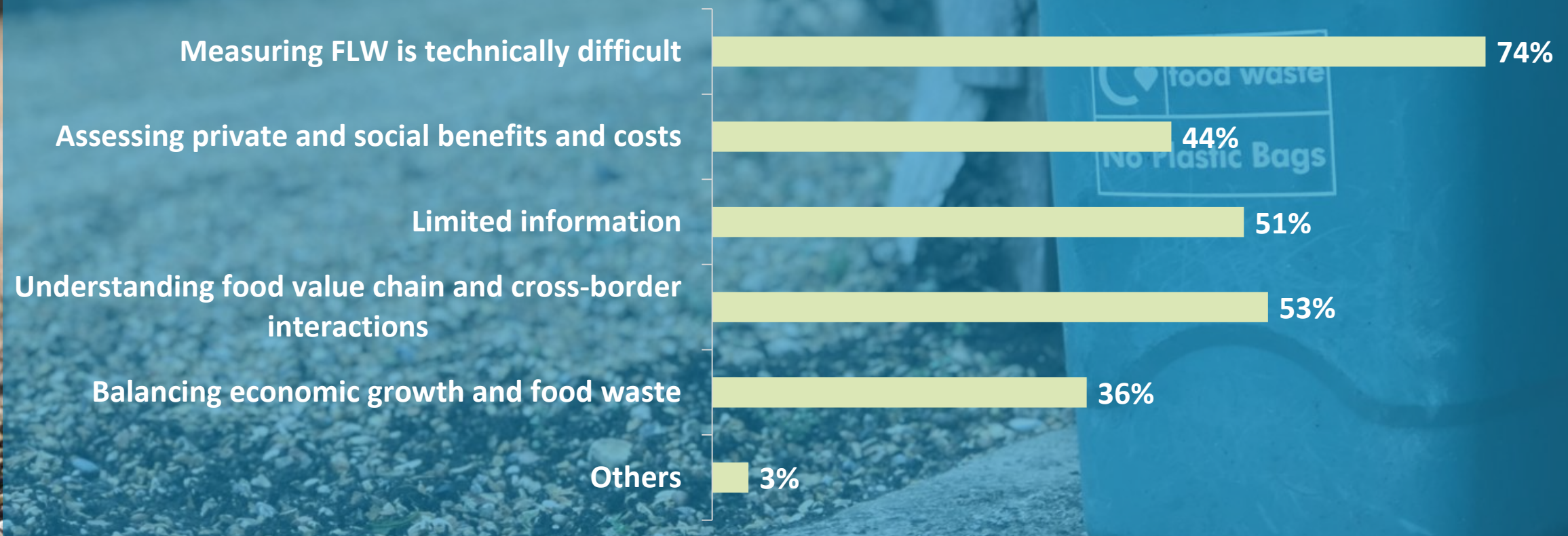
## FLW-related policies and programs BEFORE COVID-19







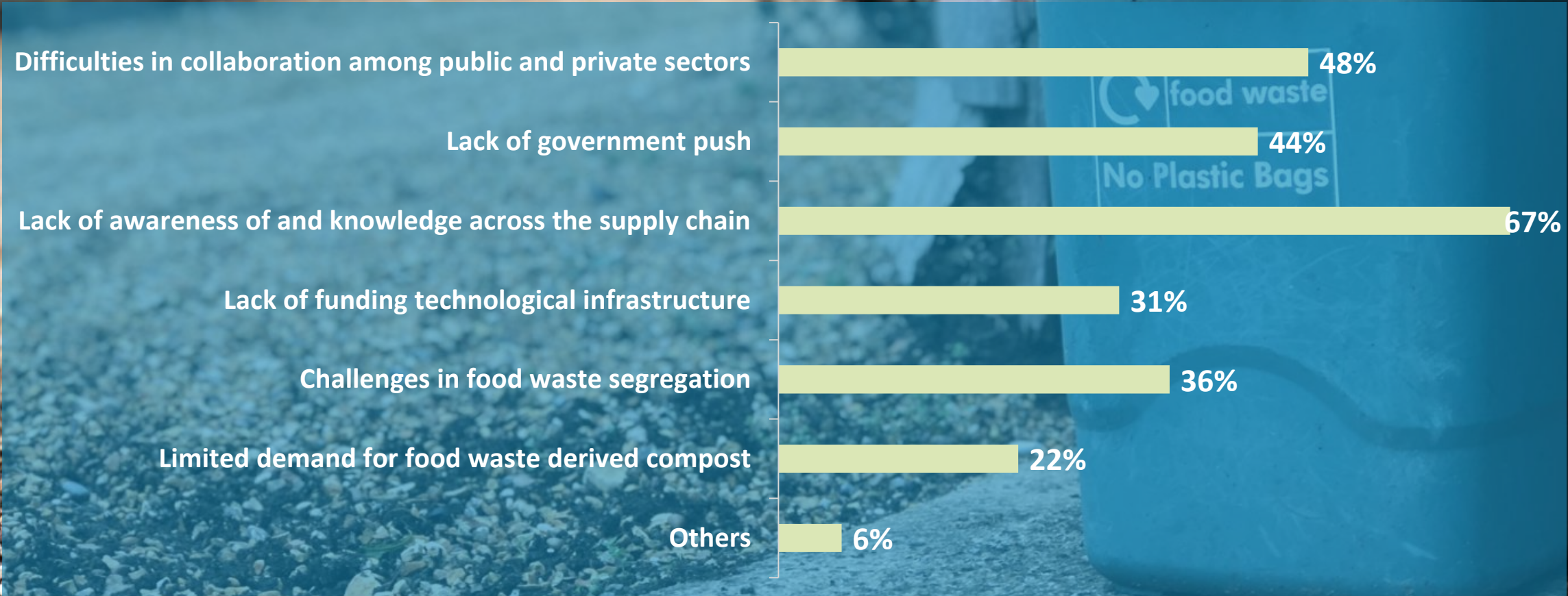
## Challenges in Policy Formulation







# Challenges in Policy Implementation









# IMPACT

Food supply  
chain

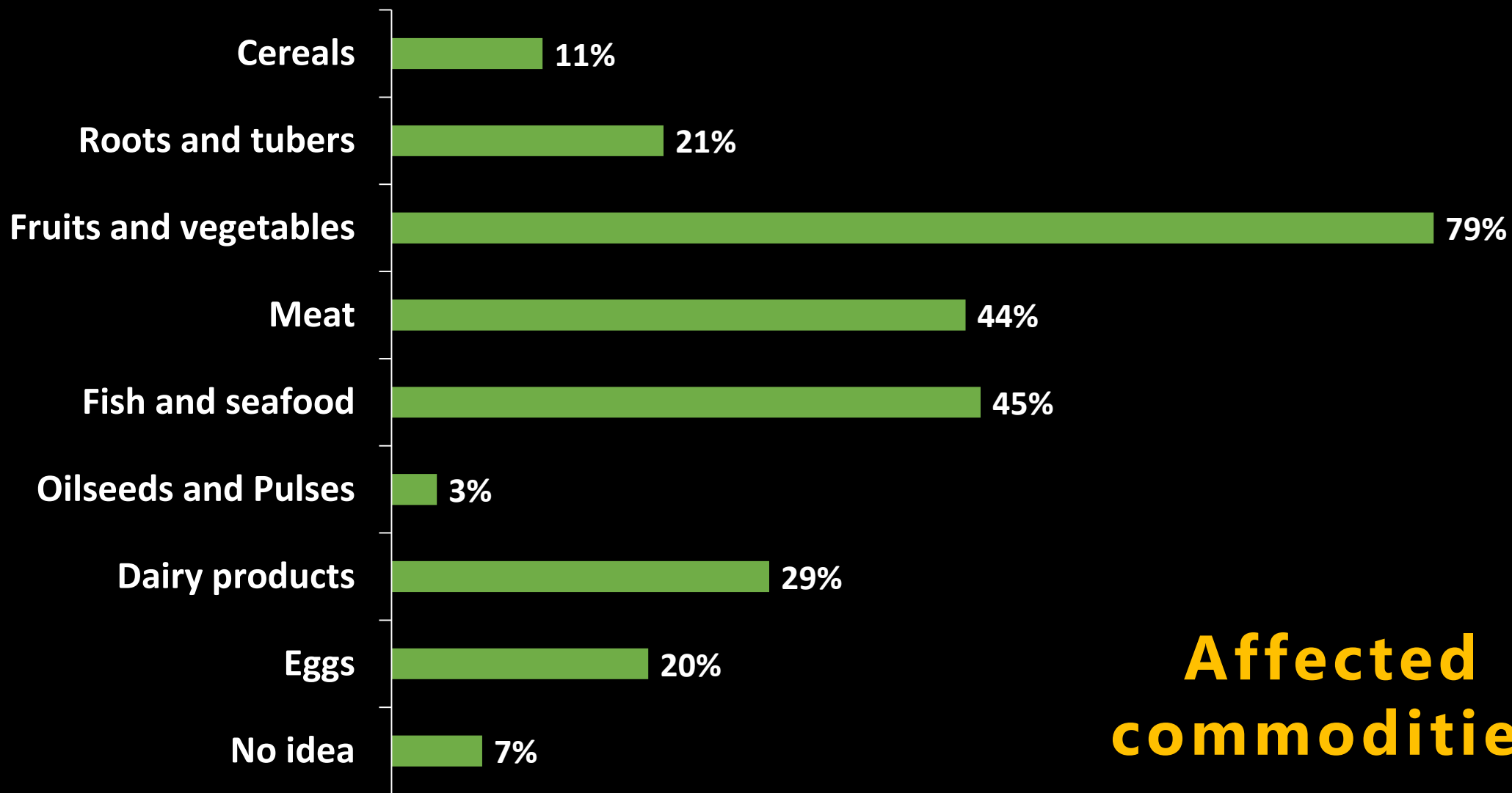


Affected  
commodities



Two-year  
expectations





**Affected  
commodities**

## PROCESSING



## HANDLING AND STORAGE



## DISTRIBUTION



## AGRICULTURAL PRODUCTION



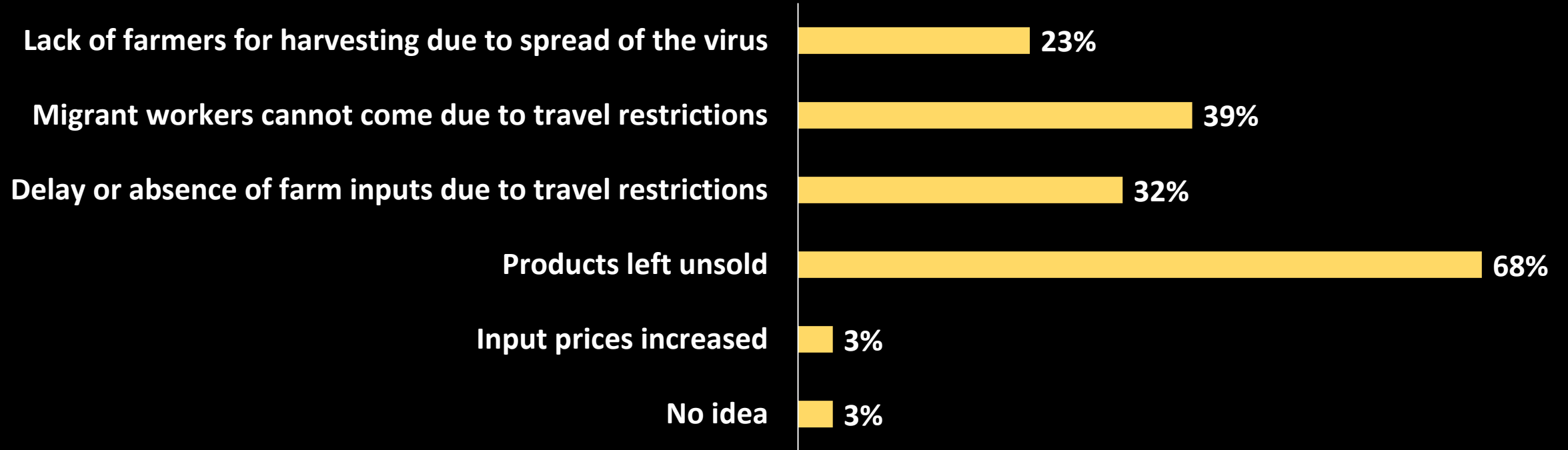
## CONSUMPTION

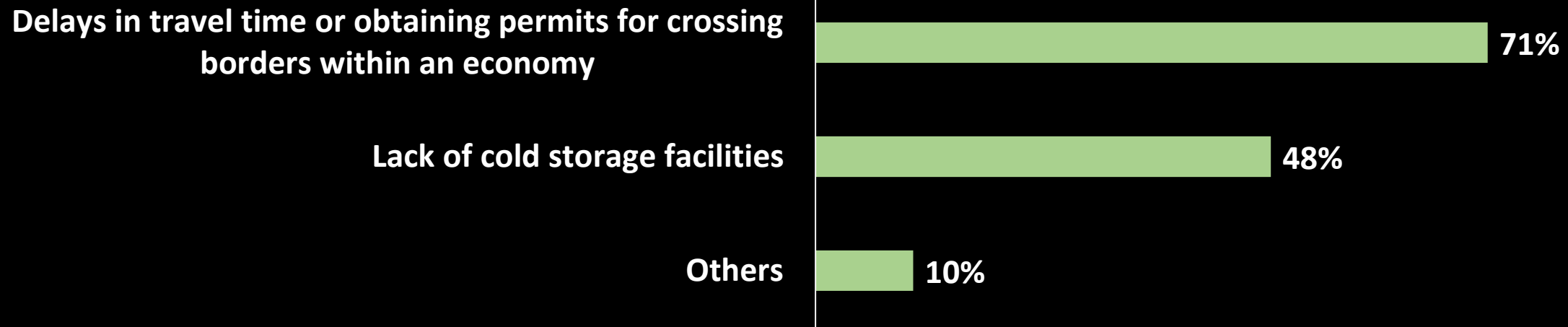


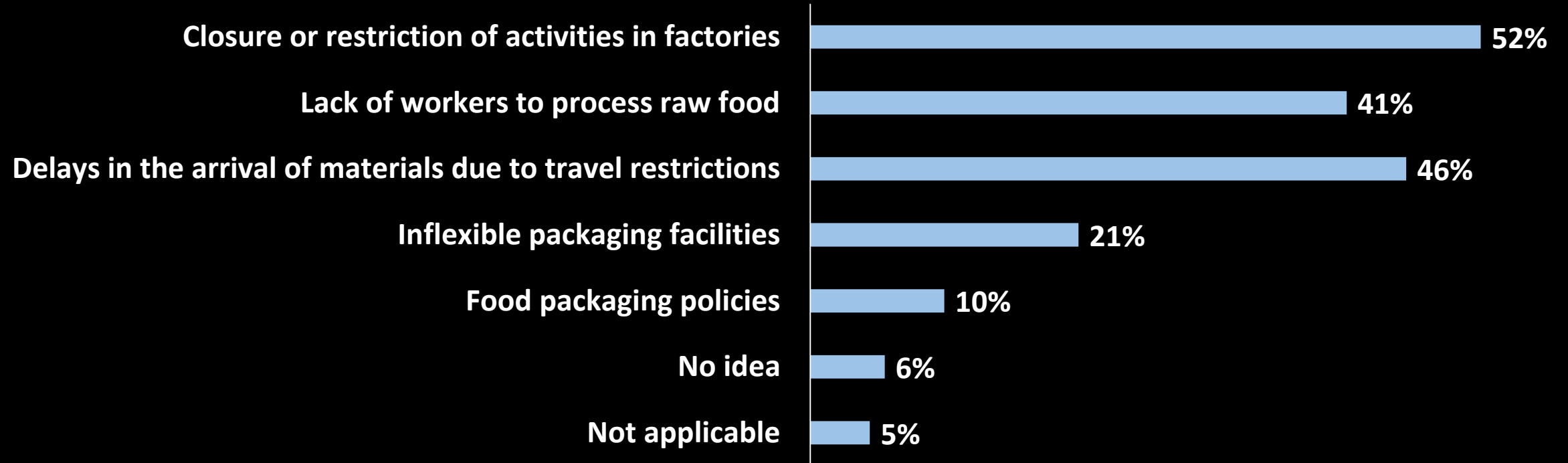
**FOOD  
SUPPLY  
CHAIN**

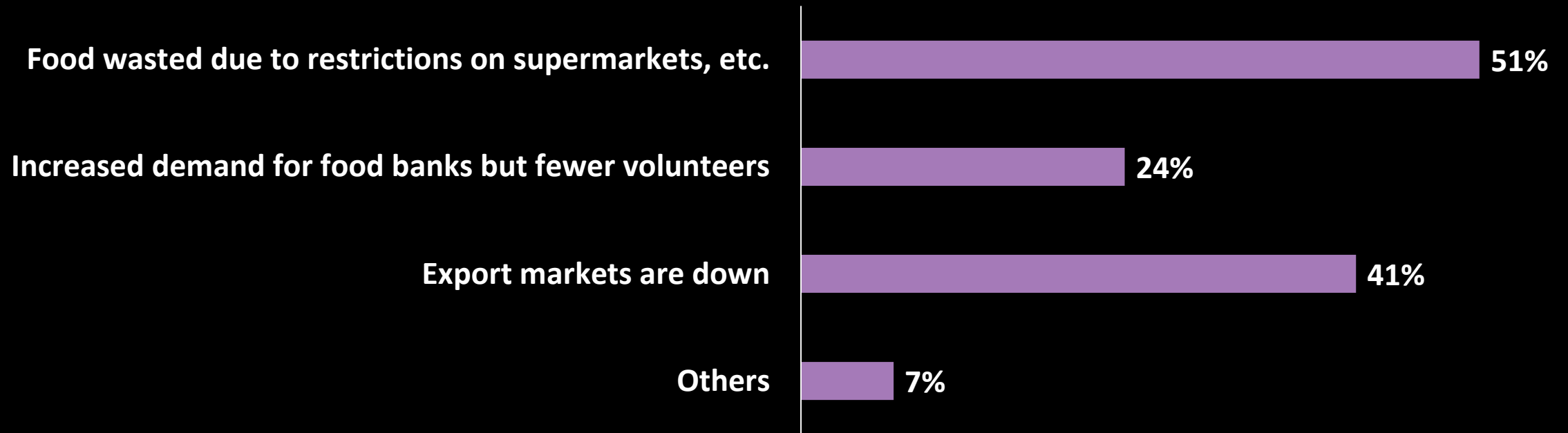


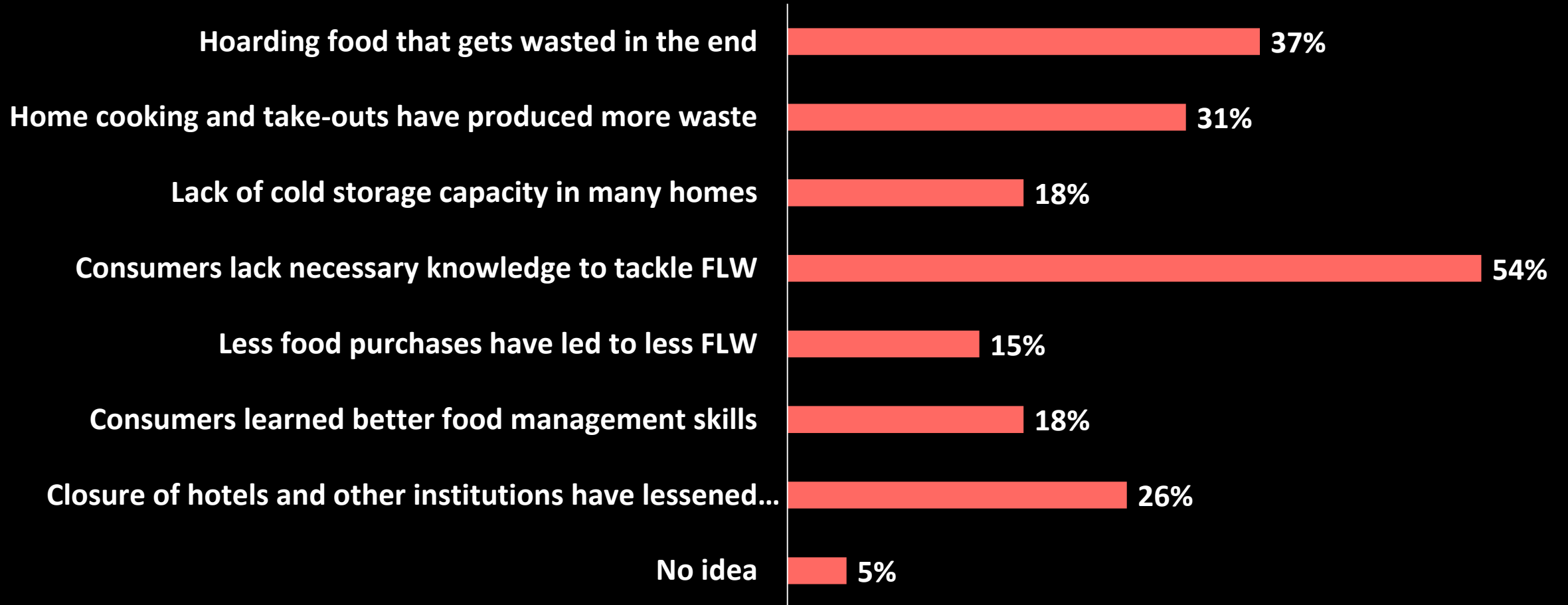














**Businesses cannot predict demand accurately**

**75%**

**Financing is difficult to obtain**

**37%**

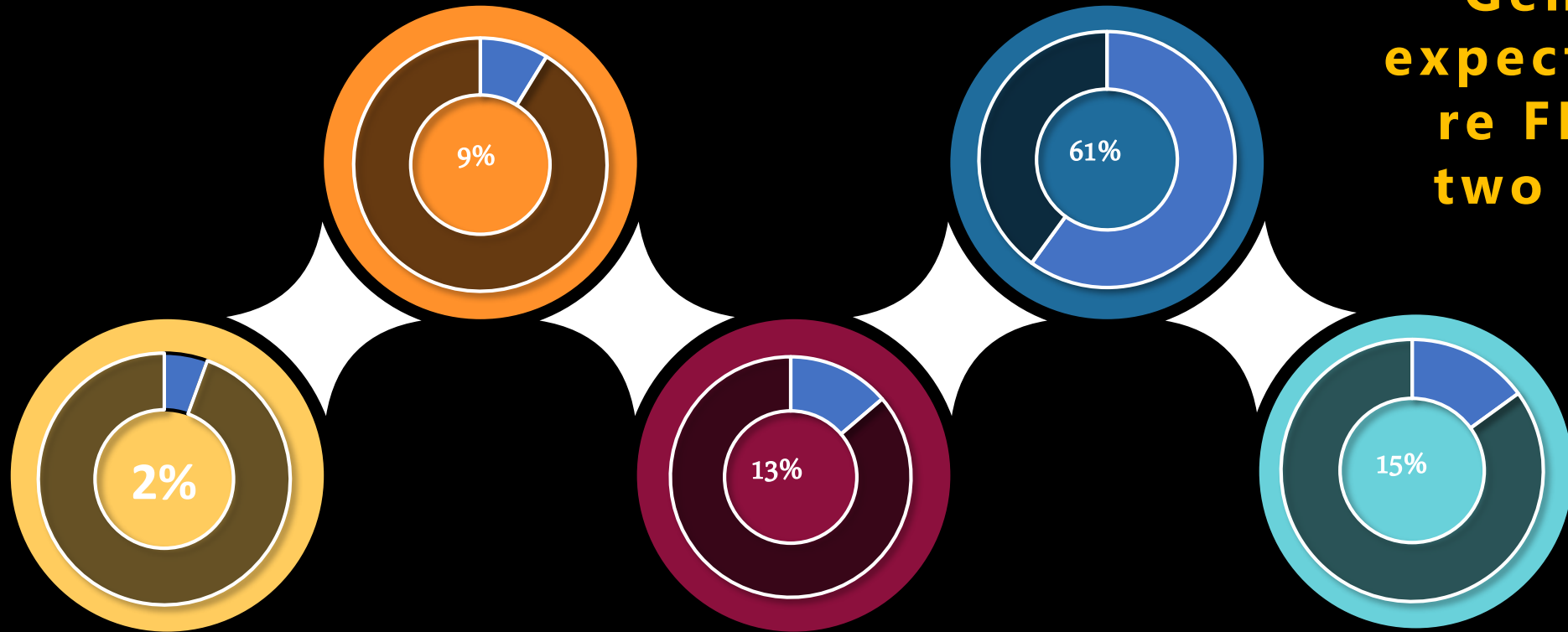
**No idea**

**5%**

**Slightly more negative**

**Slightly more positive**

**General  
expectations  
re FLW in  
two years**



**Significantly more  
negative**

**No Change**

**Significantly more  
positive**





22

Canned soup  
Canned beans  
Canned vegetables



# SOLUTIONS

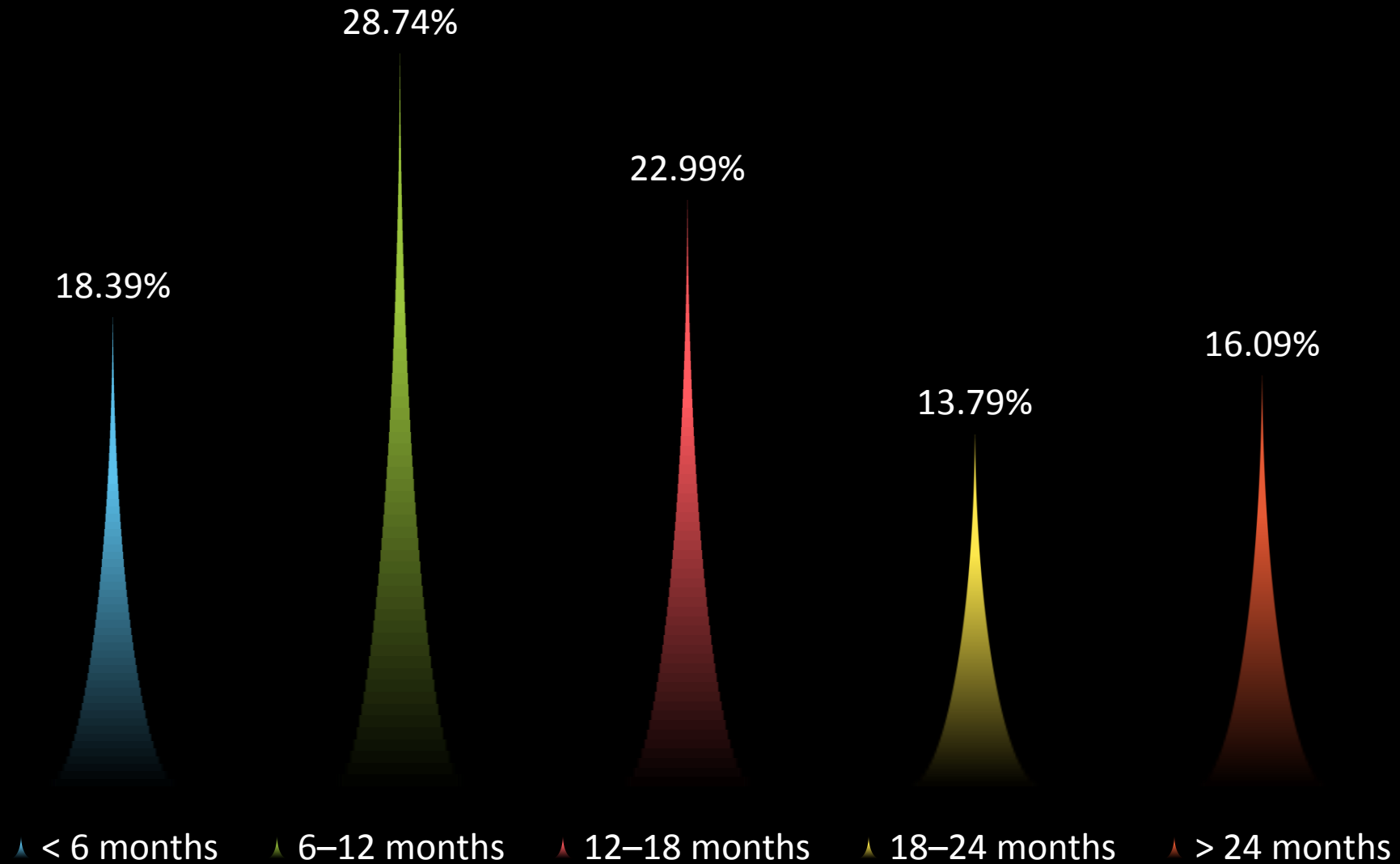
Infrastructure  
and Technology

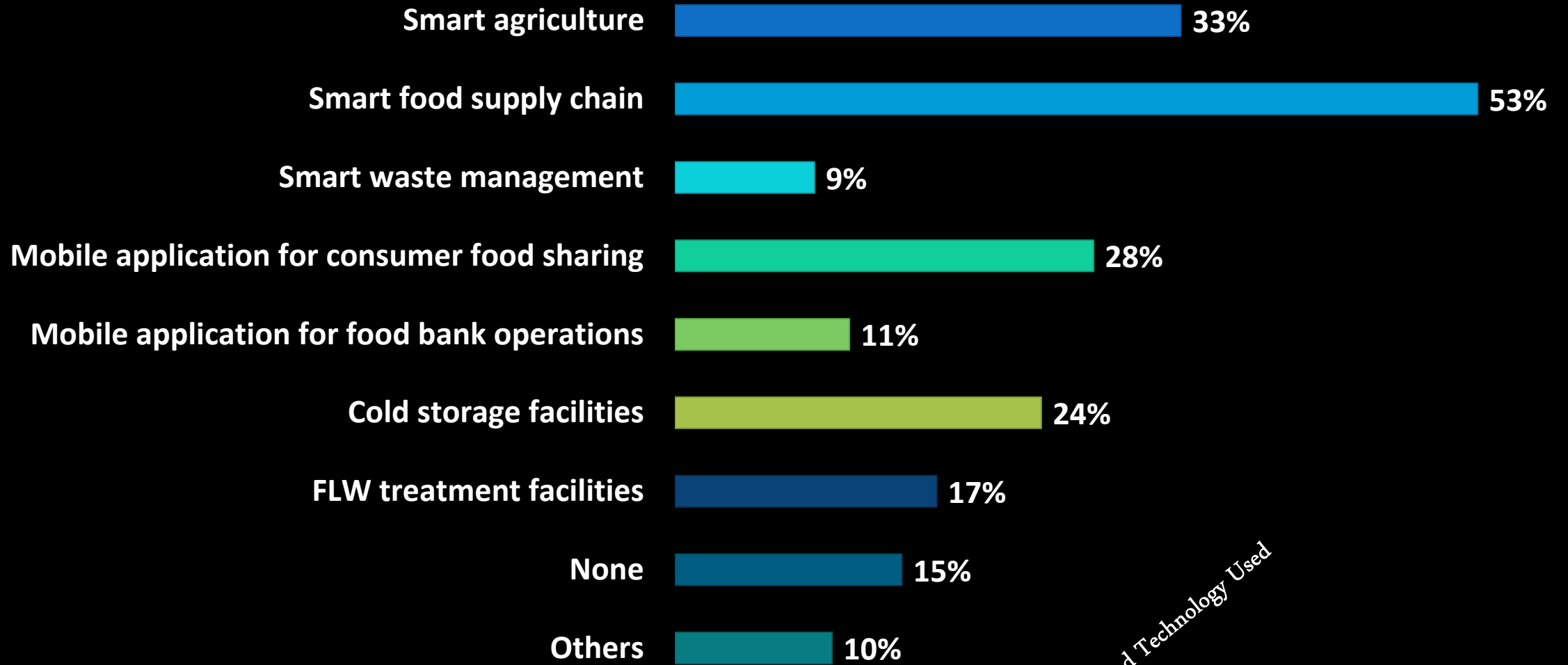
Expected  
Recovery

other comments



## Food supply chain recovery AFTER COVID-19 (expectation)





Infrastructure and Technology Used

**RESEARCH**  
Full utilization of agri products and by-products; food waste recycling; food banks problems

1

**WORKING WITH FOOD BANKS**  
Micro food banks and community pantries

2

**CONSUMER AND BUSINESS EDUCATION**  
Guidebooks; food waste ambassadors; campaigns in school and residences; comprehensive website

3



**GOVERNMENT**  
Policy/campaign; special committee; website; funding

7

**CONNECTING FARMERS TO MARKET**  
Rural markets; online markets; IFADs 4Ps

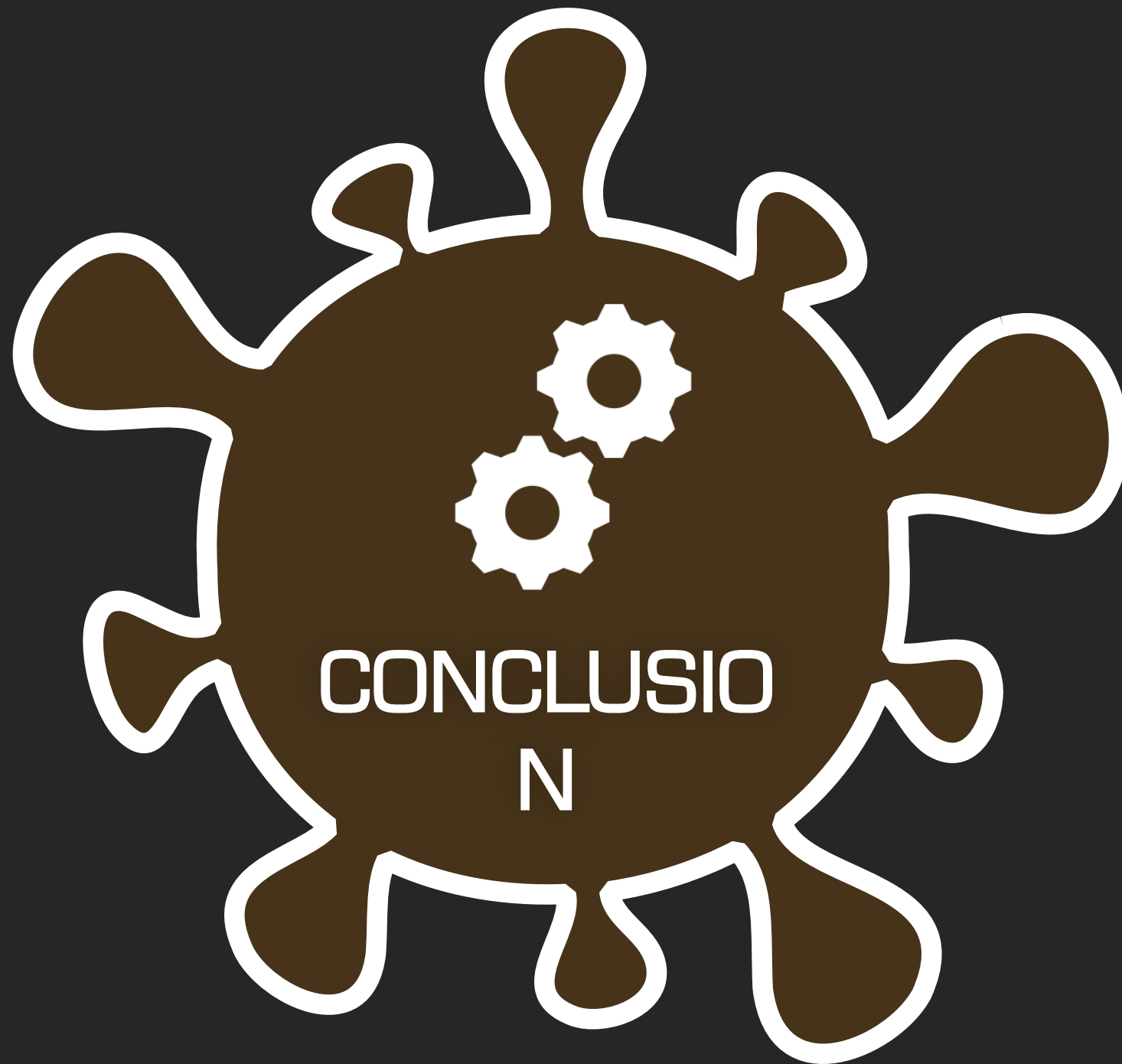
6

**STORAGE CAPACITY**  
Along the whole food supply chain and food banks.

5

**ADDRESSING LACK OF MANPOWER**  
Tapping people who have lost their jobs; use of robotics

4



CONCLUSION  
N



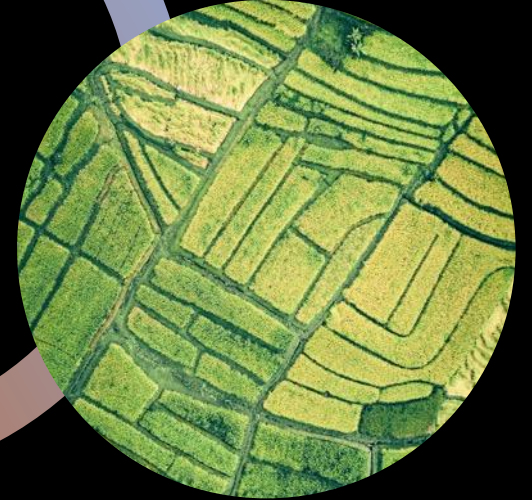


# CONCLUSION

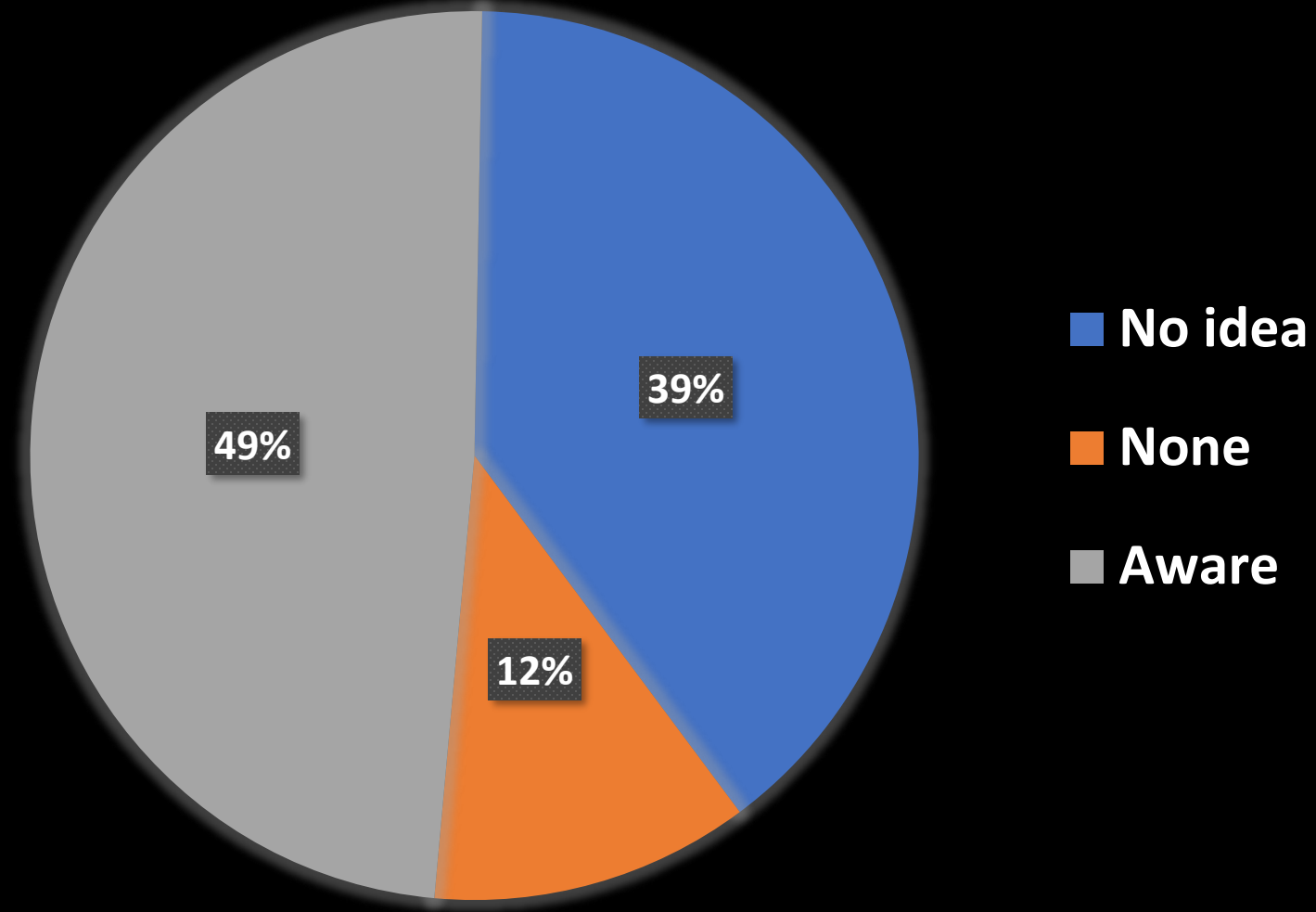




Need for **cross-ministerial collaboration** of agencies in charge of agriculture, industry, social welfare, and environment.



## Aware of other FLW Policies during COVID-19





危机 / 危機

(위기, วิฤต)

**Turning a  
COVID-19 crisis  
into an  
opportunity  
to unite and learn.**





**“THROWING  
AWAY FOOD IS  
LIKE **STEALING**  
FROM THE  
TABLE OF THE  
POOR AND  
HUNGRY.”**

*— POPE FRANCIS  
(5-JUN-2013, GENERAL  
AUDIENCE)*



ORA

ขอขอบคุณ

고사합니다

TERIMA KASIH

Спасибо

sal

谢谢

N BạN

ありがとう  
ざいま